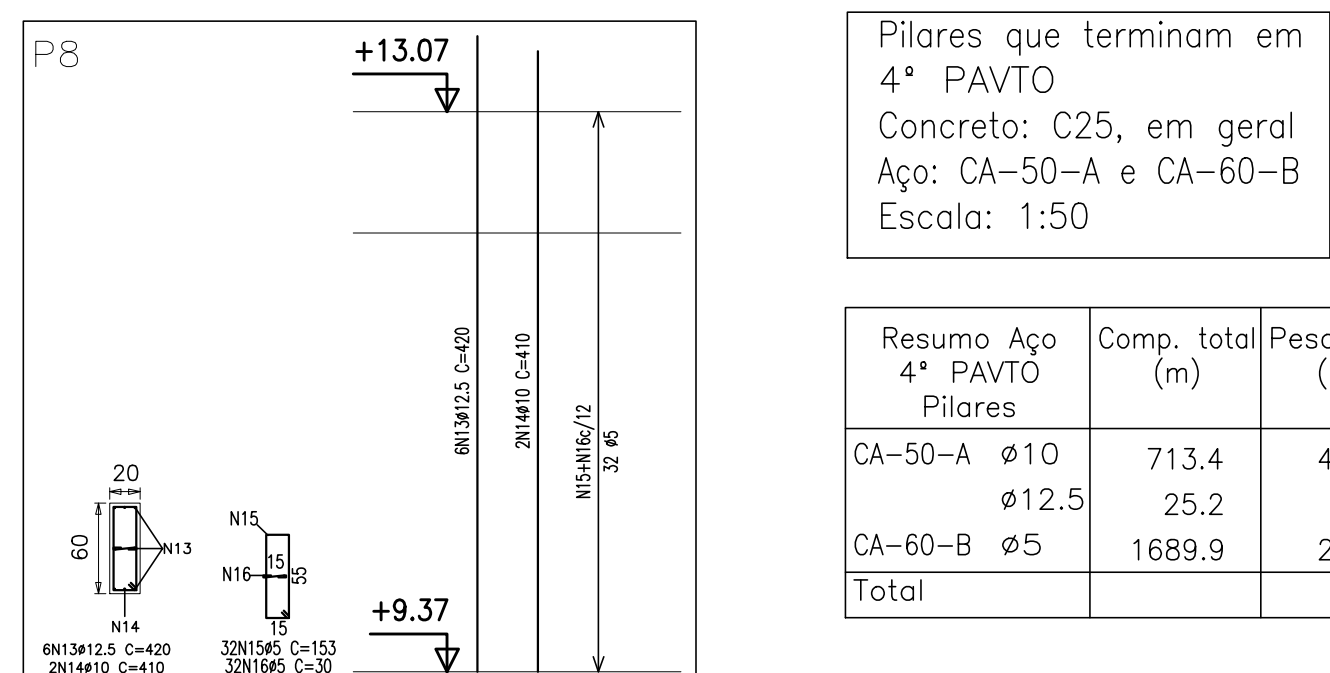




Elemento	Pos.	Diam. Q	Dob. Ret.	Dob. Com.	Total Com.	CA-50 (A)	CA-60 (A)
			(cm)	(cm)	(cm)		
P1=47+P6+P8+P12	4	8	5	410	150	2460	15.4
P2=25+6+16+P12	8	5	35	410	152	2484	7.6
P2=25+6+16+P12	8	5	35	410	29	928	1.5
					Total: 1087	16.9	10.0
						236.6	140.0
P2	4	8	5	410	1410	20.6	9
	8	5	35	410	182	2824	1.5
	8	5	35	410	29	928	1.5
					Total: 1087	22.7	1.7
P3=4+P6+P9+P11	7	6	5	410	150	2460	15.4
P5=15+6+16+P19	8	5	35	410	152	2484	7.6
P20=25+6+16+P19	8	5	35	410	29	928	1.5
					Total: 1087	16.9	10.0
						202.8	7.6
P5	10	10	8	410	1286	10.8	10.8
	11	9	5	32	152	152	484
	12	5	35	32	29	928	1.5
					Total: 1087	22.7	10.0
P8	13	12	5	6	420	420	2520
	14	10	2	410	410	520	1860
	15	5	35	32	153	153	4896
	16	5	35	32	30	960	3.0
					Total: 1087	32.8	10.1
Armadura longitudinal interior	17	86.3	29	8	582	590	11100
	18	86.3	17	8	582	590	11100
	19	86.3	20	5	560	560	12744
	20	86.3	60	5	560	560	12744
	21	86.3	9	5	560	560	12744
	22	86.3	9	5	560	560	12744
	23	86.3	7	5	560	560	12744
	24	86.3	9	5	560	560	12744
	25	86.3	17	6	354	350	6120
	26	86.3	17	6	354	350	6120
	27	86.3	17	6	354	350	6120
	28	86.3	12	10	560	560	12744
	29	86.3	12	10	560	560	12744
	30	86.3	12	10	560	560	12744
	31	86.3	12	10	560	560	12744
	32	86.3	12	10	560	560	12744
	33	86.3	12	10	560	560	12744
	34	86.3	12	10	560	560	12744
	35	86.3	12	10	560	560	12744
	36	86.3	12	10	560	560	12744
	37	86.3	12	10	560	560	12744
	38	86.3	12	10	560	560	12744
	39	86.3	12	10	560	560	12744
	40	86.3	12	10	560	560	12744
	41	86.3	12	10	560	560	12744
	42	86.3	12	10	560	560	12744
	43	86.3	12	10	560	560	12744
	44	86.3	12	10	560	560	12744
	45	86.3	12	10	560	560	12744
	46	86.3	12	10	560	560	12744
	47	86.3	12	10	560	560	12744
	48	86.3	12	10	560	560	12744
	49	86.3	12	10	560	560	12744
	50	86.3	12	10	560	560	12744
	51	86.3	12	10	560	560	12744
	52	86.3	12	10	560	560	12744
	53	86.3	12	10	560	560	12744
	54	86.3	12	10	560	560	12744
	55	86.3	12	10	560	560	12744
	56	86.3	12	10	560	560	12744
	57	86.3	12	10	560	560	12744
	58	86.3	12	10	560	560	12744
	59	86.3	12	10	560	560	12744
	60	86.3	12	10	560	560	12744
	61	86.3	12	10	560	560	12744
	62	86.3	12	10	560	560	12744
	63	86.3	12	10	560	560	12744
	64	86.3	12	10	560	560	12744
	65	86.3	12	10	560	560	12744
	66	86.3	12	10	560	560	12744
	67	86.3	12	10	560	560	12744
	68	86.3	12	10	560	560	12744
	69	86.3	12	10	560	560	12744
	70	86.3	12	10	560	560	12744
	71	86.3	12	10	560	560	12744
	72	86.3	12	10	560	560	12744
	73	86.3	12	10	560	560	12744
	74	86.3	12	10	560	560	12744
	75	86.3	12	10	560	560	12744
	76	86.3	12	10	560	560	12744
	77	86.3	12	10	560	560	12744
	78	86.3	12	10	560	560	12744
	79	86.3	12	10	560	560	12744
	80	86.3	12	10	560	560	12744
	81	86.3	12	10	560	560	12744
	82	86.3	12	10	560	560	12744
	83	86.3	12	10	560	560	12744
	84	86.3	12	10	560	560	12744
	85	86.3	12	10	560	560	12744
	86	86.3	12	10	560	560	12744
	87	86.3	12	10	560	560	12744
	88	86.3	12	10	560	560	12744
	89	86.3	12	10	560	560	12744
	90	86.3	12	10	560	560	12744
	91	86.3	12	10	560	560	12744
	92	86.3	12	10	560	560	12744
	93	86.3	12	10	560	560	12744
	94	86.3	12	10	560	560	12744
	95	86.3	12	10	560	560	12744
	96	86.3	12	10	560	560	12744
	97	86.3	12	10	560	560	12744
	98	86.3	12	10	560	560	12744
	99	86.3	12	10	560	560	12744
	100	86.3	12	10	560	560	12744
	101	86.3	12	10	560	560	12744
	102	86.3	12	10	560	560	12744
	103	86.3	12	10	560	560	12744
	104	86.3	12	10	560	560	12744
	105	86.3	12	10	560	560	12744
	106	86.3	12	10	560	560	12744
	107	86.3	12	10	560	560	12744
	108	86.3	12	10	560	560	12744
	109	86.3	12	10	560	560	12744
	110	86.3	12	10	560	560	12744
	111	86.3	12	10	560	560	12744
	112	86.3	12	10	560	560	12744
	113	86.3	12	10	560	560	12744
	114	86.3	12	10	560	560	12744
	115	86.3	12	10	560	560	12744
	116	86.3	12	10	560	560	12744
	117	86.3	12	10	560	560	12744
	118	86.3	12	10	560	560	12744
	119	86.3	12	10	560	560	12744
	120	86.3	12	10	560	560	12744
	121	86.3	12	10	560	560	12744
	122	86.3	12	10	560	560	12744
	123	86.3	12	10	560	560	12744
	124	86.3	12	10	560	560	12744
	125	86.3	12	10	560	560	12744
	126	86.3	12	10	560	560	12744
	127	86.3	12	10	560	560	12744
	128	86.3	12	10	560	560	12744
	129	86.3	12	10	560	560	12744
	130	86.3	12	10	560	560	12744
	131	86.3	12	10	560	560	12744
	132	86.3	12	10	560	560	12744
	133	86.3	12	10	560	560	12744
	134	86.3	12	10	560	560	12744
	135	86.3	12	10	560	560	12744
	136	86.3	12	10	560	560	12744
	137	86.3	12	10	560	560	12744
	138	86.3	12	10	560	560	12744
	139	86.3	12	10	560	560	12744
	140	86.3	12	10	560	560	12744
	141	86.3	12	10	560	560	12744
	142	86.3	12	10	560	560	12744
	143	86.3	12	10	560	560	12744
	144	86.3	12	10	560	560	12744
	145	86.3	12	10	560	560	12744
	146	86.3	12	10	560	560	12744
	147	86.3	12	10	560	560	12744
	148	86.3	12	10	560	560	12744
	149	86.3	12	10	560	560	12744
	150	86.3	12	10	560	560	12744
	151	86.3	12	10	560	560	12744
	152	86.3	12	10	560	560	12744
	153	86.3	12	10	560	560	12744
	154	86.3	12	10	560	560	12744
	155	86.3	12	10	560	560	12744
	156	86.3	12	10	560	560	12744
	157	86.3	12	10	560	560	12744
	158	86.3	12	10	560	560	12744
	159	86.3	12	10	560	560	12744
	160	86.3	12	10	560	560	12744
	161	86.3	12	10	560	560	12744
	162	86.3	12	10	560	560	12744
	163	86.3	12	10	560	560	12744
	164	86.3	12	10	560	560	12744
	165	86.3	12	10	560	560	12744
	166	86.3	12	10	560	560	12744
	167	86.3	12	10	560	560	12744
	168	86.3	12	10	560	560	12744
	169	86.3	12	10	560	560	12744
	170	86.3	12	10	560	560	12744
	171	86.3	12	10	560	560	12744
	172	86.3	12	10	560	560	12744
	173	86.3	12	10	560	560	12744
	174	86.3	12	10	560	560	12744
	175	86.3	12	10	560	560	12744
	176	86.3	12	10	560	560	12744
	177	86.3	12	10	560	560	12744
	178	86.3	12	10	560	560	12744
	179	86.3	12	10	560	560	12744
	180	86.3	12	10	560	560	12744
	181	86.3	12	10	560	560	12744
	182	86.3	12	10	560	560	12744
	183	86.3	12	10	560	560	12744
	184	86.3	12	10	560	560	12744
	185	86.3	12	10	560		



Resumo Aço 4" PAVTO Pilares	Comp. total (m)	Peso+10% (kg)	Total
CA-50-A Ø10	713.4	493	
Ø12.5	25.2	27	520
CA-60-B Ø5	1689.9	292	292
Total			812

Pranchas de referência: 17/64



Resumo Aço 4° PAVTO	Comp. total (m)	Peso+10% (kg)	Total
Armadura longitudinal inferior			
CA-50-A	<div> <div>Ø6.3</div> <div>Ø8</div> <div>Ø12.5</div> </div>	<div> <div>1667.1</div> <div>185.3</div> <div>6.6</div> </div>	<div> <div>453</div> <div>80</div> <div>7</div> </div>
CA-60-B	Ø5	416.4	72
Total			612

CONTEÚDO:	DATA:	FOLHA:
DETAHAMENTO DAS LAJES - ARMADURA TRANSVERSAL SUPERIOR	15/09/17	32/64
E ARMADURA LONGITUDINAL INFERIOR (4º PAVIMENTO)	ESCALA:	
PILARES QUE TERMINAM - 4º PAVIMENTO	INDICADA	